

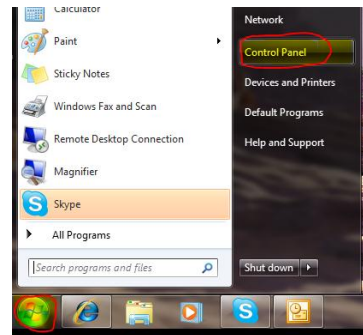


## Setting Up your Wi-Fi for Boats System

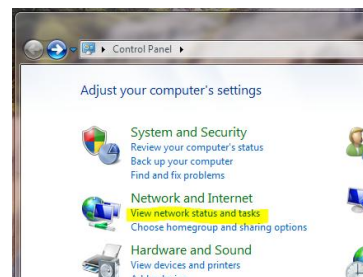
### Windows 7 & Windows Vista

Turn on your computer and after it has completely booted up follow these instructions:

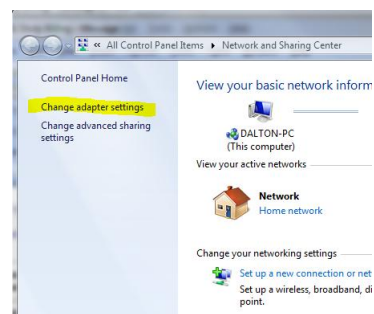
**Click on Start and then Control Panel**



**Click on View network status and task.**



**Click on "Change adapter settings"**

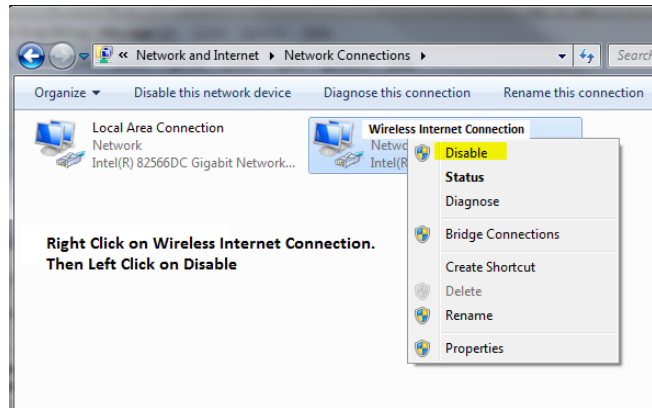


Notebook computers come configured to always try to connect to the Internet through it's Wireless Internet Connection. This will not work with your new Wi-Fi for Boats Antenna.

The Wi-Fi for Boats Antenna uses the Local Area Connection. To accomplish this we need to make a couple of changes for your computer to default to use the Local Area Connection.

Right Click on Wireless Internet Connection.

Then Left Click on Disable

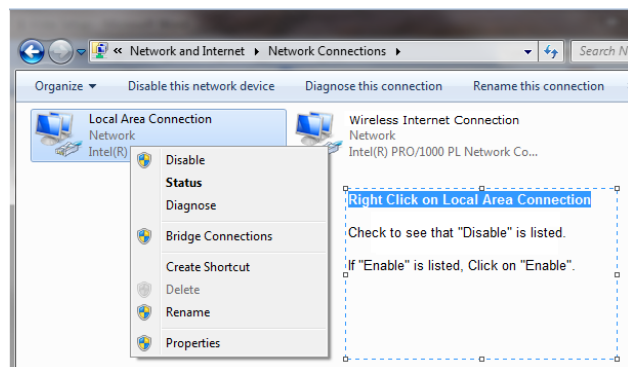


Next we must check to see that the Local Area Connection is active on your computer.

Right Click on Local Area Connection

Check to see that "Disable" is the top option. This is what we want to see.

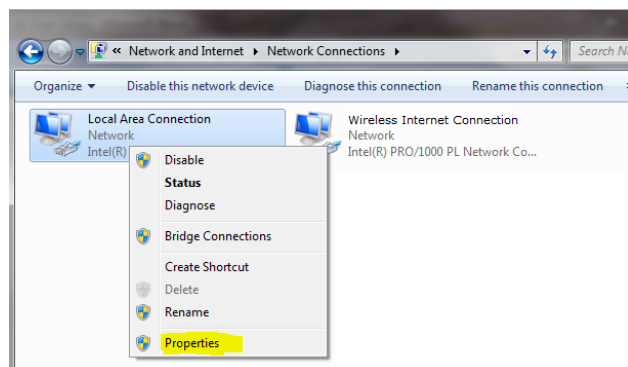
If "Enable" is the top option, then Left Click on "Enable"



Next we want to set the "Local Area Connection" Properties:

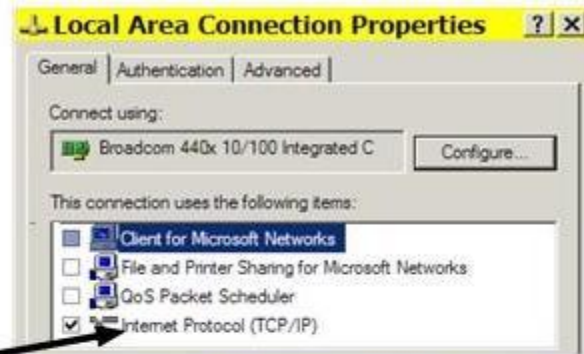
Right Click on Local Area Connection

Left Click on "Properties"

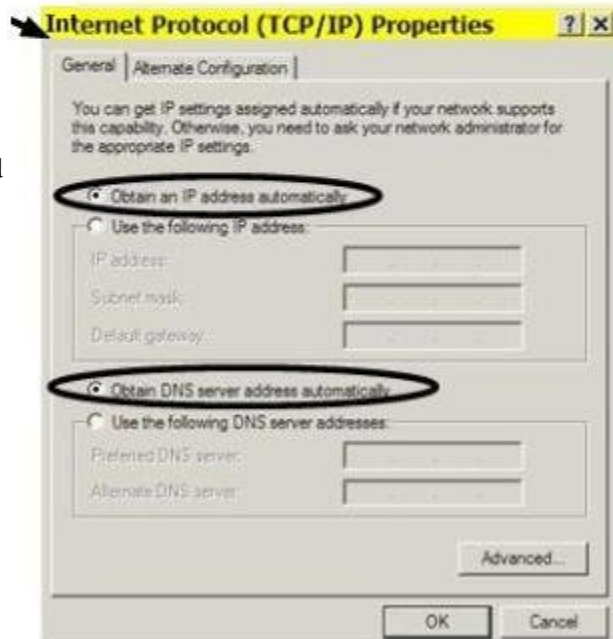


You will see the screen pictured here.

**Look down the list and make sure that "Internet Protocol Version 4 (TCP/IPv4)" has a check mark.**



Then **Double click** on "Internet Protocol" and you will see this screen.



Make sure:  
"Obtain an IP address automatically" and  
"Obtain DNS server address automatically"  
are selected.

When complete click on "Ok" twice and return to your desktop.

Setting up your computer only needs to be done once! So you don't have to worry about this again.

Your computer is now setup to use your new Wi-Fi for Boats Antenna.

## Connecting to a Wi-Fi signal and using your Wi-Fi for Boats System

Start your Internet Browser and in the **Address Line** enter **172.16.1.1**



You will be asked for a User Name and Password.



Enter "ubnt" for the User Name

Enter "ubnt" for the Password

Click OK

The Main system screen will be displayed. **Click on the Link Setup tab** and the following screen will be displayed.

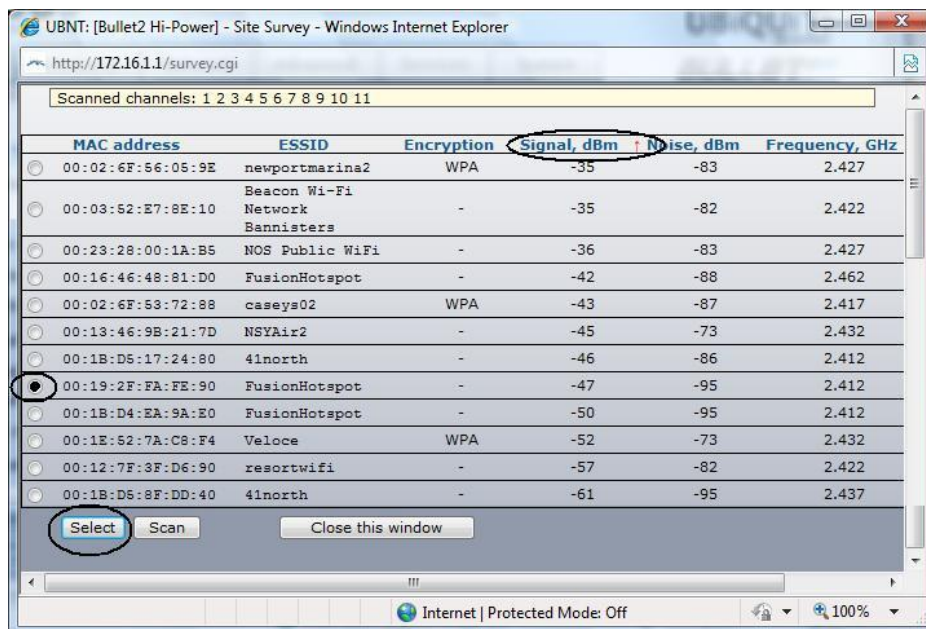


**\*\*\* CAUTION \*\*\* Never change the Wireless Mode. It must be Station.**

For the IEEE 802.11 Mode, I highly recommend using B Only, as this is less susceptible to noise and interference making it more reliable over longer distances. Mode G is great in an office where you are close to the Access Point but that is not our application.

Now connect to a station. Do this by clicking on the **Select** button.

The select button causes the radio to scan all the Wi-Fi channels listening for active stations. When it has completed scanning the system will display a list of all the available Access Points you may be able to connect to like the example below.



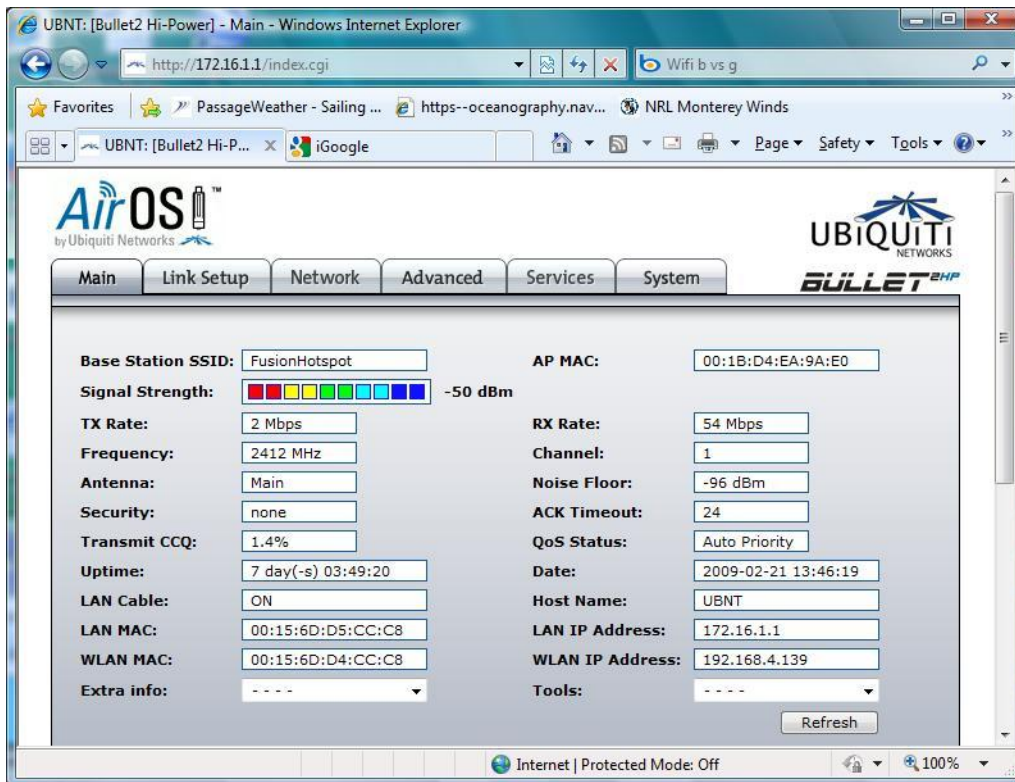
In the screen picture above, you see a list of the possible stations to connect to. Your list may be a lot longer than this so you might have to scroll down to see the buttons on the bottom. **Click on Signal, dbm** until you see the small red arrow pointing upwards. This sorts the

strongest signals to the top of the list. I can here you thinking I must be wrong because the lowest numbers are at the top of the list! Well... Signal strength is measured in dbm which are actually negative numbers. Thus the smaller the number the stronger the signal. Trust me...

Pick a station that has a strong signal by clicking on the button to the left of it.

Then click on Select at the bottom of the list and your screen will go back to the previous screen but with your selection now filling the boxes.

There are still two more things you have to do. First click on change at the bottom of the screen to tell the router you want it to make the changes. It will then ask you to confirm the changes with a pop-up at the top of your screen. Click **Accept**. The router will now process your changes and connect you to the selected station. When complete it will return you to the Link Setup screen. Click on the Main Tab to see screen below.



Now you are connected to the station and you should be able to open another Browser window and see the Internet.

There are reasons you may not be able to connect to a station. Many now use Security or MAC filtering. Security will show in the listing, and to connect to a secure site you must know the security key and possibly the password. If you have registered with a secure site, they will give you the security key and instructions of how to use it.

There is another method of securing a site. MAC filtering is very secretive. When you try to connect to a station that does not show as being secure, but yet you are not able to connect, you may be trying to connect to a station using MAC filtering. Here is how this works.

When you try to connect the station checks your MAC against a list they it has as being authorized. No match, No connect. You may have run across this when subscribing to a service and they asked you for your MAC address in order to authorize you. By the way, if you look at your **Main** screen, your MAC address is listed as the **WLAN MAC**. I highly suggest you write this down and keep it with you in your wallet so if asked for it when subscribing to a service you have it handy.

**OK, Lets make all of this super simple for you going forward!**

Click on **Link Setup**. With that on your screen save it as a favorite in your Browser. Better yet, save it as a shortcut on your Desktop! That way any time you want to connect to a different station, all you have to do is click on the shortcut!

If you forget to make a shortcut on your desk top, all you have to do is enter its address in your Browser and press Enter. Oh, you forgot the address? It is 172.16.1.1 You should write that down some place, like on sticky note and put it on your computer.

If you are wondering about all of the other information on the Wi-Fi for Boats Router screens, look but do not touch! A simple change will cause your system to stop working and require that the system be re-programmed.

We hope you enjoy using our system.

If you need help, do not hesitate to contact us by calling +1 202 286-0213 or e-mail to [dalton@wififorboats.com](mailto:dalton@wififorboats.com) and [dalton@svquietly.com](mailto:dalton@svquietly.com).